


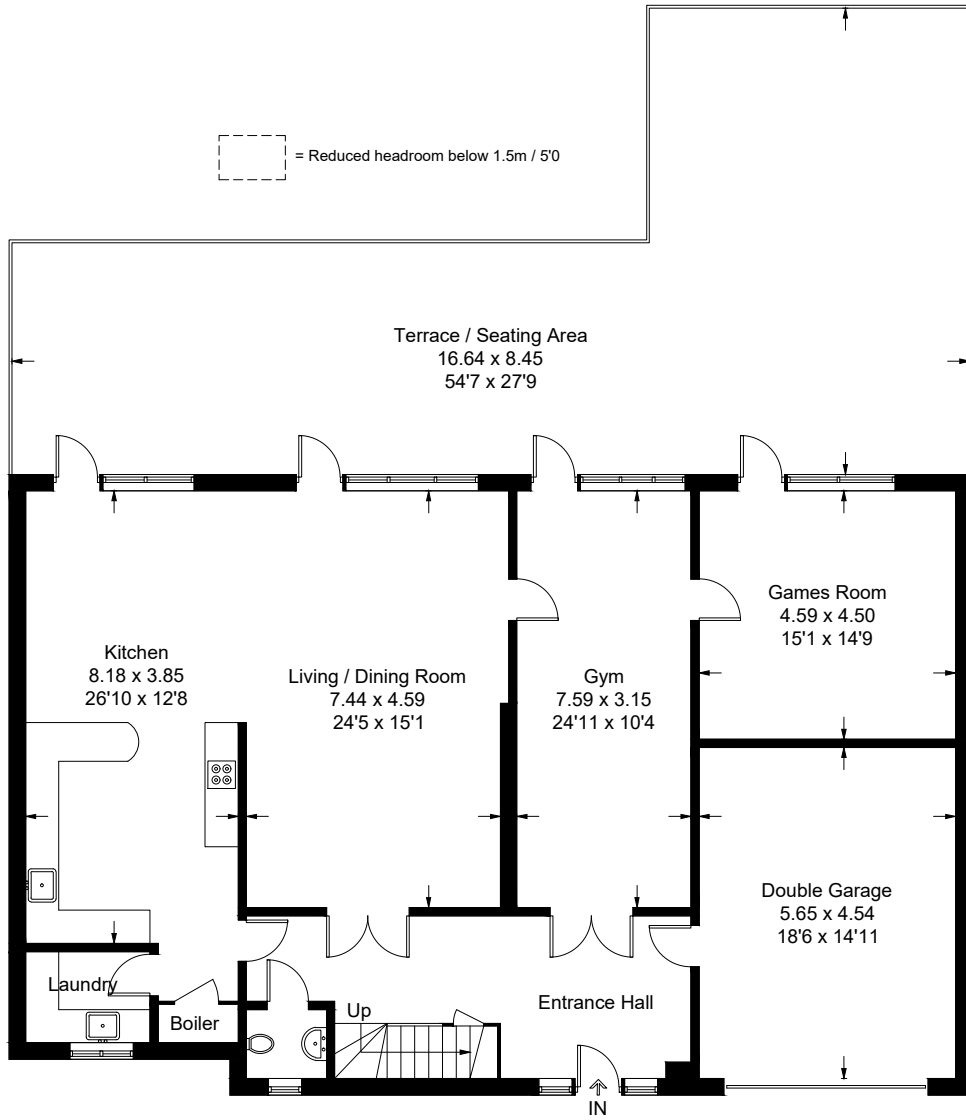
26 Hill Brow, Hove

Approximate Gross Internal Area = 317.4 sq m / 3416 sq ft

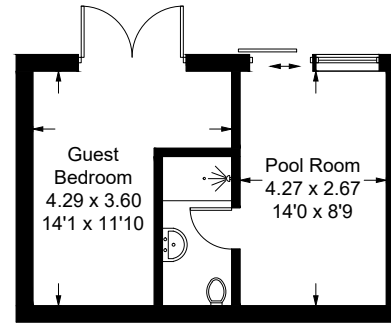
Basement = 27.7 sq m / 298 sq ft

Total = 345.1 sq m / 3714 sq ft (Including Garage)

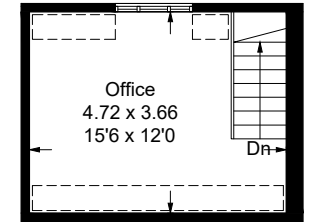
 = Reduced headroom below 1.5m / 5'0"



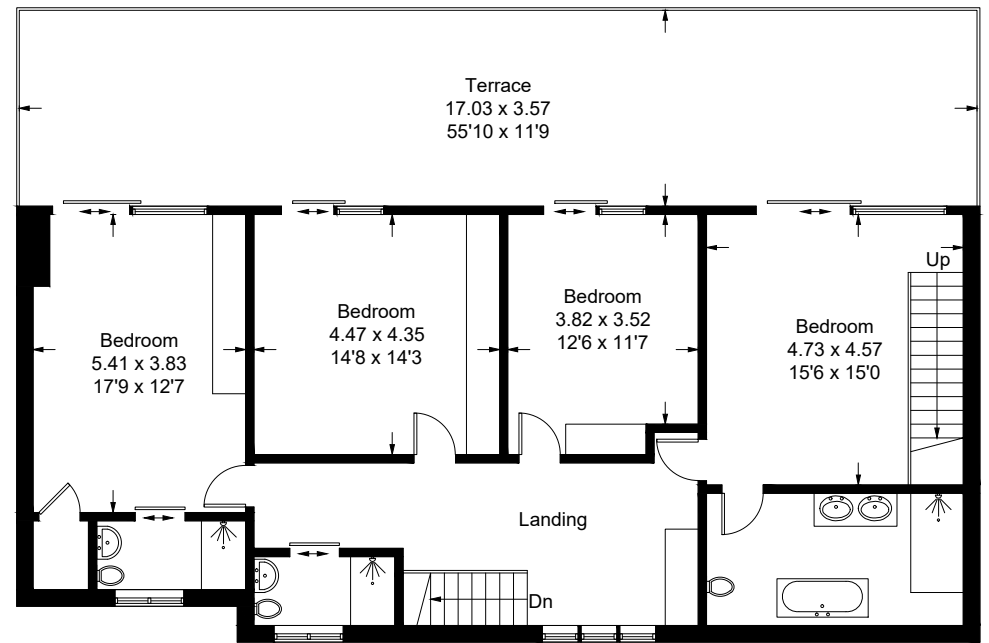
Ground Floor



Basement



Second Floor



First Floor

Illustration for identification purposes only, measurements are approximate, not to scale. floorplansUsketch.com © (ID1083423)